

**APPLICATION**

Internal clamping of round workpieces. Turning, milling, grinding and tothing operations, as well as for balancing and measuring. Ideal for thin-walled and long workpieces or long clamping lengths.

**TYPE**

Force-actuated.  
Clamping sleeves optionally vulcanized.  
Convertible to MFS (required new intermediate piece).

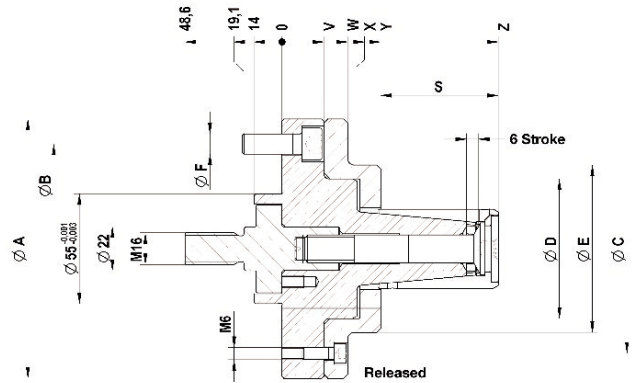
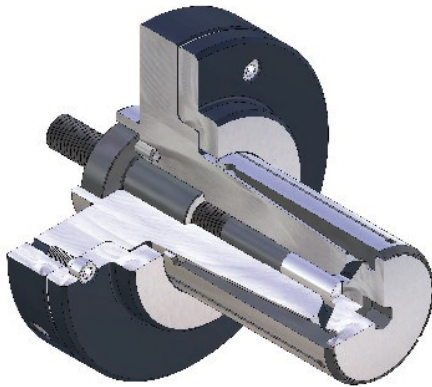


**CUSTOMER BENEFITS**

- ⊕ Sturdy clamping of the workpiece thanks to axial tension against the workpiece stop
- ⊕ High concentricity, axial run-out and repeatability
- ⊕ Light weight and reduced height thanks to compact design
- ⊕ High flexibility thanks to modular system
- ⊕ Fast change of clamping sleeves thanks to central clamping screw

**TECHNICAL FEATURES**

- Hardened, low-wear design
- Integrated lubrication
- Air sensing prepared
- **KFS** = force-actuated, flange, S-type



C18 KFS cartridge mandrel, power-operated with flanged seat, for internal clamping Consisting of basic mandrel and intermediate piece

	KFS 00	KFS 01	KFS 02	KFS 03	KFS 04	KFS 05	KFS 06	KFS 07	KFS 08	KFS 09	KFS 10	KFS 11
Cartridge Mandrel	R:1294328	8231294328	8241294328	8251294328	8261294328	8271294328	8281294328	8291294328	8301294328	8311294328	8321294328	8331294328
F max. in kN	7	9	12	12	15	15	20	20	25	25	25	25
Max. total clamping force kN	7	9	12	12	15	15	20	20	25	25	25	25
Min-Ø unclamped from	14,7	19,7	24,7	29,7	34,7	39,7	44,7	54,7	64,7	81,7	100,7	119,7
Min-Ø unclamped to	19,7	24,7	29,7	34,7	39,7	44,7	54,7	64,7	81,7	100,7	119,7	139,7
Clamping-Ø max.	20,7	25,7	30,7	35,7	40,7	45,7	55,7	65,7	82,7	101,7	120,7	140,7
External-Ø A	100	100	100	100	100	130	130	130	160	160	160	160
Pitch diameter B	75	75	75	75	75	105	105	105	130	130	130	130
Pitch diameter C	75	75	75	75	75	105	105	105	130	130	130	149
Ø D mm	40	40	46	46	46	70	70	70	83	91	87	107
Ø E mm	54	54	60	60	60	84	84	84	103	160	160	160
Ø F mm	M10	M10	M10	M10	M10	M10	M10	M10	M12	M12	M12	M12
S mm	31,5	36	45	49	59	59	79	89	99	121	138,9	171
V mm	21	21	21	21	21	21	21	21	23	21	21	25
W mm	33	33	33	33	33	33	33	33	35	21	21	25
X mm	36	36	37	41	36,5	37,5	35,5	35,5	35			
Y mm	47,5	47,5	48	51,5	46	49,5	47	47	47	33	37	57
Z mm	79	83,5	93	100,5	105	108,5	126	136	146	154	176	228

Max. clamping force kN: 3,7-4,7-6,4-6,4-8,0-7,9-10,5-10,5-10,5-13,5-13,5-13,0